



TRUST AUSTRALIAN MADE.

## The heartbeat of your home.

Garage door openers built for our conditions. Backed by our standards.  
Trusted in Australian homes.

### INTELLIGENT



SOFT  
START/STOP



WHISPER  
SILENT  
OPERATION



RAPID  
INSTALLATION  
& SERVICING



BRIGHT HALO  
LED LIGHTS



EONCONNECT  
WIFI SMARTPHONE  
ACCESS\*

### RELIABLE



EXTRA LONG  
LIFE COMPACT  
DC MOTOR



EXTENDED  
TRANSMITTER  
RANGE



EMERGENCY  
MANUAL  
RELEASE



AUSTRALIAN  
ENGINEERED  
HARDWARE



BATTERY  
BACKUP\*

### SECURE



EON+ ADVANCED  
ROLLING CODE  
TECHNOLOGY



EON+  
SAFETY  
REVERSING

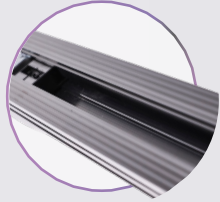


EON+  
AUTOMATIC  
CLOSE\*



EON+  
SURGE  
PROTECTION

# PULSE



Steel belt rail



Premium pre-coded handsets for safety & convenience and wall button

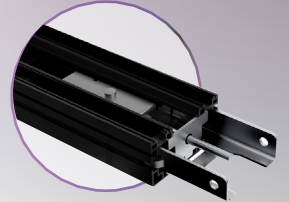
**8**  
YEAR  
WARRANTY

## WARRANTY

**10**  
YEAR  
WARRANTY

1000N	MAX. PEAK PULL FORCE	1500N
15m <sup>2</sup>	MAX. DOOR AREA	25m <sup>2</sup>
180kg	MAX. DOOR WEIGHT	320kg
20kg (200N) Balanced Door	MAX. LIFT UNDER SPRING TENSION	20kg (200N) Balanced Door
3.5m	MAX. DOOR HEIGHT	3.5m
C-rail with Belt Drive	DRIVE MECHANISM	HD Aluminium rail with Belt Drive
121mm per second	OPERATING SPEED	148mm per second
24V / 138 pcs LEDs	LED COURTESY LIGHT	24V / 138 pcs LEDs
220–240VAC, 50 – 60 Hz	INPUT VOLTAGE	220–240VAC, 50 – 60 Hz
433.92 MHz with EON+ Advanced Rolling Code Technology	RADIO FREQUENCY	433.92 MHz with EON+ Advanced Rolling Code Technology
64 memory registers	CODE STORAGE CAPACITY	64 memory registers
EON+ surge and thermal overload protection	SURGE PROTECTION	EON+ surge and thermal overload protection
-20°C to +45°C	WORKING TEMPERATURE	-20°C to +45°C
EON+ Auto Reverse	SAFETY PROTECTION	EON+ Auto Reverse
IP30	INGRESS PROTECTION	IP30
Not compatible	FIRE INTEGRATION (FIP)	Compatible

# ROYALE



Extruded black heavy duty aluminium belt rail



Luxe pre-coded handsets for safety & convenience and wall button

## POWERFUL ADD-ONS (SOLD SEPARATELY)\*



EONIC Wireless Keypad



EON+ Battery Back-up



EON+ PE Safety Beams



EONConnect Wi-Fi Lifestyle Hub



EON+ Vision Access camera

\*When paired with EON+ PE Safety Beams.

**eonic**  
automation

T: (03) 8751 8545  
[www.eonic.com.au](http://www.eonic.com.au)

©Copyright 2026 Eonic Pty Ltd. Eonic® is a registered trademark.

Your local EONIC professional dealer